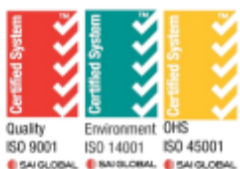




SHAMROCK CIVIL ENGINEERING CAPABILITY STATEMENT



ABOUT US

OFFICES



**185+
EMPLOYEES**



**200+ CIVIL
PLANT**



**30+ YEARS IN
BUSINESS**



**CONTRACT
CIRCA >\$80M**



**AVERAGE
TURNOVER
\$150M**

QLD

Brisbane
Townsville
Rockhampton

VIC

Melbourne

SA

Adelaide

NT

Darwin



Shamrock Civil Engineering is a privately owned civil construction company, delivering services to the gas and mining, transport infrastructure, commercial, Defence and government development sectors. Our team of more than 185 staff operate across offices in Brisbane, Townsville, Melbourne, Adelaide, Rockhampton and Darwin. Our business is driven by a collaborative approach to project delivery and the diversity of our skills and capabilities.

Shamrock Civil Engineering has been providing safe, sustainable and smart solutions since 1994. We are committed to our clients and place value and emphasis on creating and maintaining long term relationships. The breadth of our civil construction expertise combined with our integrated management system, enables us to deliver complex solutions efficiently and effectively. Through our comprehensive service offering, our priorities are maintaining the safety of our people, delivering better value for our clients and supporting our local communities.

Our key civil construction services include:

- Roads and bridges
- Dams and ponds
- Stormwater drainage and fittings
- Water pipelines and infrastructure
- Sewerage pipelines and infrastructure
- Bulk earthworks
- Land and soil remediation
- Explosive ordnance facilities
- Bulk fuels
- PFAS remediation
- Hardstand and lay down areas
- Building and construction pads
- Landfill cells and facilities
- Airport runways, aprons and ancillary works
- Railway holding and marshalling yards
- Sidings and station works
- In ground services excavation, trenching and conduiting



DEFENCE

Shamrock Civil is an experienced contractor with a successful history of completing projects on various Australian Defence sites over the last 20 years for Tier 1 Builders and directly for Department of Defence. This provides the benefit of a workforce that has a strong knowledge of working within operational Australian Army facilities and the health and safety, environmental and quality expectations of Department of Defence.

Shamrock Civil Engineering pride ourselves as a specialist civil engineering company, providing construct options for Defence facilities including but not limited to- service installations and relocations, stormwater, wastewater and pipe works, roads, concrete works and landscaping.

When working within an operational environment we utilise our collaborative contracting model, and “no surprises” approach, to communicate consistently and effectively with all stakeholders. This ensures that we are minimising the impact of the construction on the existing operations of the sites we are working within. By maintaining open, honest and cooperative communication we can identify risks and opportunities and implement mitigation measures to effectively manage the requirements of individual projects.

KEY DEFENCE PROJECTS:

- Bradshaw Field Training Area 3 Year Road Works NT
- Townsville Field Training Area Civil Works
- Shoalwater Bay Training Area 3 year civil works
- Fanning River TFTA Demolition
- 3 Years Road- Lavarack Barracks Demolition Works
- ASMTI Stage 14 UOLF Western Civils & Stage 3 Access Roads
- Cultana Training Area 3 Year Road Works, SA
- Townsville Field Training Area 3 Year Road Works
- Darling Downs Sporting Facility, QLD
- Townsville Field Training Area (TFTA) Waste Transfer
- Growler Project, RAAF Amberley- Jet Fuel, QLD
- Fence Upgrade Lavarack Barracks, QLD
- Air Traffic Control Tower Oakey Stages 3 & 22
- Compound Extension & Parking Bays Lavarack
- Air Traffic Control Tower (ATC) Townsville Stage 7
- Lavarack Barracks Road Maintenance, QLD
- Battlefield Airlifter- Early Works Services Diversion
- Urban Soh Roads Civil & Infrastructure, Evans Head
- LAND 121 Stage 2 Unit Sustainment Facilities, QLD
- Defence Logistics Transformation Program (DLTP)- Joint Logistics Unit Lavarack Barracks, QLD
- 17th Construction Squadron Civil Works, QLD
- 21st Construction Sqd Earthworks & Roadworks

Qualified professionals, with specialist experience, who understand the safety and security requirements of working within established Defence facilities.



MINING, OIL & GAS

Shamrock Civil Engineering has successfully delivered large-scale civil construction projects to the mining, oil and gas sectors over the past 20 years, in remote and challenging locations in Australia. We have collaborated with clients to provide exceptional value in projects of all size and complexity.

- Bulk earthworks (>1,850,000m³)
- Detailed excavation (>300,000m³)
- HDPE, clay and coletanche liners (>1,200,000m²)
- Subgrade preparation
- Earth bunds and foundation preparation
- Trenching and pipeline installation
- Pond and dam remediation
- Access road and carpark construction
- Stormwater and culverts

KEY MINING, OIL & GAS PROJECTS:

- Santos Arcadia Brine Ponds, QLD
- Arrow Concentrated Brine Ponds, QLD
- Phosphate Hill Cell 3D Evaporation Pond, QLD
- Mungana Tailing Storage Facility Cell 1, QLD
- Biloela Escarpment Remediation Works, QLD
- King Vol Boxcut Chillagoe, QLD
- X41, Southern & SD12 Dams, QLD
- Kenya Ponds Remediation, QLD
- QGC BC/IX Ponds- Northern Waters Treatment Plant, QLD
- Cameby Downs Mine Cell 1 Rectification, QLD
- QGC Sediment Ponds- Northern Waters Treatment Plant, QLD
- APLNG Condabri WWT- Ponds & Pads, QLD

Shamrock Civil has delivered a number of projects for Laing O'Rourke, demonstrating a genuine commitment to safety, quality, environment and overall project performance.

This was evident throughout the BC/IX Ponds Package project delivery and characterised by the careful planning, implementation and review of safe work methods and systems. The smooth and coordinated effort by the project team is a credit to their culture and expertise.

Laing O'Rourke acknowledges Shamrock Civil's professionalism and looks forward to maintaining a close working relationship that continues to meet expectations and provide mutual outcomes for all involved.

Laing O'Rourke



LANDFILL

Shamrock Civil Engineering have developed a wealth of experience in the landfill industry over the years, having completed several projects in Queensland and Victoria.

Through these projects, we have been able to broaden our capabilities and have gone on to secure landfill projects for other key clients. Working across these sites, Shamrock Civil Engineering has continued to develop a high standard of quality assurance, necessary for the auditing and approval of landfill cell construction and successfully carried out works on live landfill sites, with minimal disruption. Shamrock Civil Engineering has constructed landfill cells as large as 450,000m² including:

- Bulk and detailed earthworks
- Compacted clay liners (GCL, HDPE & Geotextile)
- Leachate and groundwater collection systems
- Attenuation ponds
- Pipeworks and culverts
- Access roads
- Revegetation

KEY LANDFILL PROJECTS:

- Mitchell Landfill Leachate Dam Expansion
- Mitchell Landfill Cell 6
- MRL Cells 4C1-4 and 3C Construction
- Werribee Landfill Cell 6
- Cell 3 Dooen Landfill, Horsham
- New Chum Leachate Pond
- Fraser & Deals Rd Landfill Rehabilitation
- Plenty Landfill Rehabilitation Stages 2 and 3
- New Chum Cell 1+5 Batter Cap
- MRL Cell 4B1, & 4B3 Construction – Inc Early Works
- New Chum Cell 3A
- Cell 6 Leachate Aggregate Placement VIC
- Springvalley Landfill Cap Remediation – Leachate Collection Drain, VIC
- Melbourne Regional Landfill Cell 4A, VIC
- Wollert Landfill Construction of Cell 12, VIC
- Hallam Road Landfill Cell 12, VIC
- New Chum Cell 4B, QLD
- Melbourne Regional Landfill Cell 3B, VIC
- Hervey Range & Stuart Landfill, QLD
- Victory Road Landfill Cell 4B, VIC

By leveraging cutting-edge technology and sustainable practices, we aim to deliver long-lasting, cost-effective solutions that benefit both our clients and the environment.

As we look to the future, Shamrock Civil Engineering remains dedicated to expanding our expertise in the landfill sector, continually enhancing our capabilities to meet the evolving needs of our clients and the communities we serve.



RENEWABLE ENERGY

Renewable energy is produced using natural resources that are constantly replaced and never run out.

Shamrock Civil Engineering completed the Civil Works on The Sun Metals Solar Farm Project in January 2018.

This is currently Australia's largest solar farm, covering 120 hectares of land and generating 124MW of power. The Solar Farm is used to supply power to the Sun Metals zinc refinery near Townsville and its low cost will likely establish a \$300 million expansion in the future.

Shamrock Civil Engineering continue to embrace renewable energy technologies including solar, wind power and hydropower and remain committed to further expanding our capability within this market.

KEY RENEWABLE PROJECTS:

- Sun Metals Solar Farm Flood Rectification Works, QLD
- Sun Metals Solar Farm Civil Works, QLD
- Australian Institute of Marine Science Solar Farm, QLD

"Our team were very happy with the works completed by Shamrock Civil. A hearty congratulations and thanks were given directly to the team, to thank them for a job very well done. For myself, the Shamrock team have been a pleasure to work with. They have delivered high-quality work and made sure to meet all the on-site work requirements. A big thank you to everyone for your help in ensuring that this project was smooth to work on and for delivering a high-quality result."

Kylie Mossop, Downer Group

Shamrock Civil Engineering successfully completed civil works on Australia's largest solar farm, covering 120 hectares of land and generating 124MW of power.



TRANSPORT INFRASTRUCTURE

Shamrock Civil Engineering has experience working to stringent programs, dealing with multiple stakeholders and working in high volume traffic / pedestrian areas on many Transport Infrastructure Projects. We have successfully collaborated with various stakeholders on these including Queensland Rail, Government Sectors, Local Councils, Business Owners and Residents. We coordinate the works carefully, safely, without disruption to the local communities and with minimal interruption to existing services.

Shamrock Civil Engineering have successfully delivered multiple projects in the road and bridge, rail, airport and port sectors, including:

- Clearing and earthworks
- Bridge construction
- Roadworks
- In-ground services

Shamrock Civil Engineering has a strong understanding of the rail sector and operating environment, having successfully delivered multiple projects working adjacent to live railways, overhead electrification and under live rail conditions.

Seamless security interface and strict control measures by Shamrock Civil Engineering, has ensured that risks associated with airport projects do not affect the operations of the live airport facilities. Shamrock Civil Engineering understands the importance of compliance with all airport security protocols.

KEY ROAD & BRIDGE PROJECTS:

- Townsville Core Bulk Water Access Roads, QLD
- Kingsford Smith Drive, QLD
- Pacific Highway Upgrade Woolgoolga to Ballina, NSW
- D&C Chardon Bridge Replacement, QLD
- Kin Kora Intersection Upgrade, QLD
- Manus Island Road Repairs & Maintenance, PNG
- King Street North RNA Showgrounds, QLD
- D&C Edward O'Neill Bridge Replacement, QLD
- Bridge Rd & Paradise St Rehabilitation, QLD

KEY PORT PROJECTS:

- North Queensland Bulk Ports Stormwater, QLD
- Brisbane Container Terminal 11 Civil Works, QLD
- Port of Brisbane Shoulder Widening, QLD

KEY RAIL PROJECTS:

- Next Generation Rolling Stock (NGRS) Maintenance Depot – Civil Works & Services, QLD
- Ferny Grove Train Station Upgrade, QLD
- Gold Coast Rapid Transit- Early Stormwater, QLD
- Salisbury to Kuraby Rail Upgrade Civil Works, QLD

KEY AIRPORT PROJECTS:

- Townsville Airport Ground Transport Package, QLD
- Brisbane Air Traffic Service Centre, QLD
- BAC Domestic Terminal Access Civil Works, QLD
- BAC International Airport Culvert Works, QLD
- BAC Multi-Level Carpark In-ground Services, QLD



WATER & WASTEWATER

Shamrock Civil Engineering has over 25 years experience delivering stormwater, water and sewer reticulation systems and stabilisation works.

We have delivered RCP ranging from 375mm to 2,100mm in diameter, culvert structures up to 2,400mm in height and water and sewer pipelines up to 2,600m in length.

Shamrock Civil Engineering respects the environment, leaving a minimal footprint or impact to surroundings, whilst completing projects.

“Shamrock Civil was engaged by Richmond Valley Council to undertake embankment stabilisation works on Ocean Drive, Evans Head, NSW.

The works were adjacent to the Evans River foreshore and were completed ahead of schedule and without any harm to the neighbouring waterway.

The works were completed to a high standard and received many compliments from the community.

Shamrock Civil was active in finding solutions for any hiccups which were encountered during the project.

Council looks forward to working with Shamrock Civil in the future.”

Richmond Valley Council

KEY WATER & WASTEWATER PROJECTS:

- Forest Glen Master Drainage Browns Plains, QLD
- Battlefield Airlifter Early Works Services Diversion, QLD
- Urban South Aerial Weapons Range – Roads Civil & Infrastructure, NSW
- RNA Detention Tank Stormwater, QLD
- Arlington St Master Drainage Underwood, QLD
- Ocean Drive Slope Stabilisation, NSW
- Sarina Waste Transfer Station, QLD
- Brisbane Street Watermain Replacement, QLD
- BAC International Airport Culvert Works, QLD
- Gold Coast Rapid Transit Stormwater Drainage, QLD
- Brisbane Airport Multi-Level Carpark In-ground Services, QLD
- Renee St & Waller Rd Stormwater Upgrade, QLD
- Lady Cilento QLD Children's Hospital, QLD
- Amberley Sewer Pit & GPT, QLD
- Holts Road Stormwater Culvert Upgrade, QLD

Capability encompassing expertise in stormwater, water and sewer reticulation systems and stabilisation works.



BUILDING

Shamrock Civil Engineering has over 25 years experience delivering civil works for tier 1 builders including:

- ADCO Constructions
- Hutchinson Builders
- John Holland
- Laing O'Rourke
- Lend Lease
- Watpac Australia

Through delivering these projects Shamrock Civil has gained a sound knowledge and understanding of working in Hospital, Shopping Centre, School, Commercial and Correctional Zones. We place stringent controls on the management of noise and dust pollution, minimising impacts on daily operations while ensuring minimal impact on access requirements for vehicles. We maintain adequate and safe pedestrian access, regular communications, recognition and understanding of security protocols.

KEY COMMERCIAL PROJECTS:

- Southpoint Stage B- Southbank Earthworks, QLD
- Tribune on Grey Building Earthworks, QLD
- Matisse Tower Basement Excavation, QLD
- QLD Cultural Centre Millennium Arts Bulk Excavation, QLD

KEY CORRECTIONAL PROJECTS:

- New Youth Detention Centre Bulk Civil Works, QLD
- Gatton Correctional Facility Civil Works, QLD
- Arthur Gorrie Correctional Centre & Brisbane Reception Centre Upgrade Civil Works, QLD

KEY HEALTH PROJECTS:

- Herston Specialists Rehabilitation & Ambulatory Care, QLD
- St Andrew's Ipswich Private Hospital Carpark, QLD
- Logan Hospital Intersection Upgrade, QLD
- Gold Coast Private Hospital Carpark, QLD
- The Qld Children's Hospital Civil Works, QLD
- Mackay Base Hospital Stage 3 Carpark, QLD
- Logan Hospital Carpark Reconfiguration, QLD

KEY EDUCATIONAL PROJECTS:

- Springwood Road State School Drainage, QLD
- Collingwood Park State School Civil Works, QLD
- West Pacific Pines State School Civil Works, QLD
- Brisbane Boy's College Civil & Road Works, QLD
- ACLLL Springfield University Carparks & Roadworks, QLD
- AIBN University of QLD Civil Works, QLD

KEY RETAIL PROJECTS:

- Townsville Reef HQ Office Demolition, QLD
- Heathwood Woolworth Distribution Centre, QLD
- Costco Ipswich Civil Works, QLD
- Toowoomba Grand Central Water & Sewer, QLD
- Robina Town Centre Carpark & Stormwater, QLD
- Indooroopilly Shopping Centre Intersections, QLD
- Ipswich Riverlinks Shopping Centre External Roads, QLD
- Mango Hill Retail Development Civil Works, QLD



Why WORK WITH US

Shamrock Civil is committed to delivering excellence in civil construction by focusing on the key business practices such as health, safety, environmental and quality. Our third-party certified management systems have evolved to meet the new challenges associated with the increased complexity and value of projects we undertake.



SAFETY

The safety of our people is our number one value. We ensure our initiatives are linked to comply with the *Work Health and Safety Act (2011)* and stand by the mantra that there is no task so important that it compromises the safety of an individual. Our strong health and safety culture can be attributed to our Safety for Life initiative, which focuses on a Zero Harm culture and providing a supportive working environment for our employees, subcontractors and partners.

Shamrock Civil's Workplace, Health & Safety system complies with the requirements of ISO 45001, is third party certified and has also achieved Federal Safety Accreditation.



ENVIRONMENT

Shamrock Civil is committed to understanding, meeting and continuously evolving our approach to environmental management. Our Environmental Management System has been developed to reduce the impact our operations have on all aspects of the environment, including native flora and fauna, air and water quality, soil conditions and cultural heritage. We implement practices that significantly reduce our impact, whilst continuously developing these practices to improve our environmental performance.

Shamrock Civil's Environmental system is third party certified by SAI Global and complies with the requirements of ISO 14001.



HEALTH & WELLBEING

We are taking steps to continually improve the mental and physical health of our workforce, which has the potential to deliver significant productivity benefits to our employees and the industry. We have implemented a dynamic health program, helping to create safer work attitudes and encouraging behavioural change through recognising the links between health and safety at work and at home. By fostering a supportive work environment, we aim to empower our employees to take charge of their health and well-being. As we continue to build on these efforts, we are committed to creating a culture where health, safety, and personal growth are integral to our success and the satisfaction of our clients and partners.



QUALITY

Shamrock Civil is constantly striving to improve our products and services for the benefit of our clients and the betterment of our business. Our multi-faceted Quality Management System includes a detailed analysis of client demands prior to the commencement of operation and stringent quality control procedures during construction. We assess all products and services to ensure conformance to the requirements of each project's specifications, drawings and relevant standards.

Shamrock Civil's Quality Management System complies with the requirements of ISO 9001 and is third party certified by SAI Global.



Shamrock GIVING BACK



COMMUNITY ENGAGEMENT

Shamrock Civil Engineering is committed to leaving a legacy in the communities in which it operates. The company is keen on assisting local communities through infrastructure, employment and training.

Shamrock Civil Engineering provides support to a range of community based groups and partnerships including charity golf days, educational programs, sporting teams, charitable programs and key infrastructure to organisations across the country.



LOCAL PARTICIPATION

Shamrock Civil Engineering is committed to the principles of sustainable development of Small and Medium Enterprise businesses within the local geographical footprints of our operations to enhance the socioeconomic sustainability of the local communities.

Shamrock Civil Engineering is committed to providing early communication to the local business community to allow interested parties to maximise their supply delivery opportunities with Shamrock Civil Engineering in their local region.

We approach each project individually, actively identifying opportunities for local community engagement and participation. This enables beneficial outcomes for the project team, client and local community.



INDIGENOUS

Shamrock Civil Engineering is committed to improving the social and economic welfare of Indigenous people by providing opportunities for employment, promoting career development, and providing a culturally sensitive workplace.

In May 2017, Shamrock Civil Engineering announced its partnership with Waanyi Aboriginal Corporation, an indigenous company based in North Queensland. The joint venture was registered as Waanyi Shamrock United, known commercially as WSU Civil.

WSU Civil recognise the importance of providing real opportunities to Indigenous communities, to assist in raising their economic and social development, which ultimately improves their standards of living and associated health and well-being status.

This has been a long standing approach to each of our business operations and this partnership now strengthens that position. We provide services to the civil construction industry, while offering local indigenous communities the opportunity to take part in wealth-generating activities on traditional lands.

Shamrock Civil Engineering's continued focus is on increasing our commitment to Indigenous engagement across the company and to create a diverse workforce. We have extensive experience working in regional and remote areas and within Aboriginal and Torres Strait Islander communities. Our policies, plans, initiatives and training programs support our commitment to provide equal opportunities.

In 2025 we launched our Reconciliation Action Plan (RAP), demonstrating a commitment to building meaningful relationships with Indigenous communities. The RAP outlines strategies for advancing reconciliation through respect, partnerships, and opportunities for Aboriginal and Torres Strait Islander peoples. This initiative aims to integrate Indigenous perspectives into operations, promoting inclusivity and equity in the industry. By incorporating reconciliation principles, we seek to foster a culturally enriched work environment that values diversity and mutual respect.





RELEVANT EXPERIENCE



BRADSHAW FIELD TRAINING AREA

3 YEAR ROAD WORKS NT

Location

Timber Creek, NT

Client

Department of Defence (Aurecon)

Commencement Date

August 2021

Completion Date

November 2022

Contract Value

\$17.2M

Overview

Shamrock Civil was engaged to complete various road maintenance and improvement works. The works consisted of rehabilitating existing road pavement, constructing heavy-duty pavement, installing new concrete floodways, and sealing pavement. Shamrock's scope also included implementing erosion and sediment controls around waterways and installing concrete canvas with armour rock around all the floodways.

Scope of Works

Roadway, drainage and signage works are to be conducted along the existing primary road of:

- Ikymbon Road 30.65 km
- Angalarri River Road 33.8 km
- Homestead Access Road 2.65 km
- Ikymbon/Angalarri Road reinforced concrete intersection
- Sixteen reinforced concrete floodways complete with sealed approaches and concrete canvas
- 17 km of two coat bitumen seal on Ikymbon Road

General maintenance of the unsealed roads was carried out to ensure that the Bradshaw Field Training Area remained practical and accessible for all training activities conducted by the ADF and visiting foreign troops. A road maintenance and management plan was developed and implemented. Pavement material was produced using existing borrow pits, involving limited regrowth vegetation clearing, water extraction from an existing bore, and quarrying materials required to complete the main scope of work.

Achievements

- SCE effectively used pre-existing borrow pit locations from the original road pavement, resulting in compliant gravel produced with high efficiency.
- SCE successfully maintained a strong level of local and indigenous involvement in the project, surpassing 20% indigenous participation.
- There were no Lost Time Injury (LTI) incidents reported on site.





SUN METALS SOLAR FARM - CIVIL WORKS

Location

Townsville QLD

Client

RCR O'Donnell Griffin

Commencement Date

August 2017

Completion Date

January 2018

Contract Value

\$4.1M

Overview

Shamrock Civil Engineering was contracted by RCR O'Donnell Griffin to conduct bulk earthworks for the development of a 116 MW solar power plant at the Sun Metals zinc refinery in Townsville. The solar farm will span up to 120 hectares and will connect to Sun Metals' existing 33/132kV substation.

Scope of Works

- Stripping of vegetation on site which was a disused mango farm
- Leveling and rolling of 140,000m² site
- Filling and compaction of three dams
- Demolition of 1.67km of existing construction road to the site
- Forming of the Solar Array earthworks including spreading of 80,000m³ spoil mound, screening and stock piling of 20,000m³ of spoil material and re-working 47,000m³ of old quarry ground levels
- Construction of 7km of unsealed access roads to enable construction of the array structures
- Construction of footings for the support structures, including bored piers
- Removal and disconnection of redundant water main

Achievements

Shamrock Civil Engineering successfully finished the project without any recorded Lost Time Injuries (LTIs). This achievement highlights Shamrock Civil Engineering's commitment to safety and proactive risk management. By fostering a culture of vigilance, the company not only protected its workforce but also set industry benchmarks. The project's success was driven by innovative strategies and strong collaboration, ensuring quality and efficiency.





TOWNSVILLE FIELD TRAINING AREA (TFTA) ROAD REFURBISHMENT

Location

Townsville Field Training Area, QLD

Client

Department of Defence (Aurecon)

Commencement Date

September 2022

Completion Date

April 2023

Contract Value

\$10M

Overview

Shamrock Civil were awarded the design and construct project for the refurbishment and maintenance works of seven roads and tracks that were identified as significantly deteriorated within the existing road network of TFTA.

Scope of Works

- Reformation and recompaction of existing road formation to achieve crossfalls and road width using existing material.
- Installation and construction of additional erosion and sediment controls.
- Earthworks included 95km length of scarification, placement of 3018t of 50-150mm rock and placement of 83722.40t of 2.5 road base material.
- Clearing and reformation of all spoon/table drains, swales and turnouts.
- 313 turn out drains constructed.
- 351 rock check dams rectified.
- V Drains: Total length of drainage constructed was 147km.
- Rock protection: Total length of 1075m, widths of 2m.
- Cement Stabilised Floodway: 17 floodways constructed, with a total length of 536m, widths of 5m.
- Construction of a 12m x 6m concrete causeway.
- Place average 200mm layer of 2.5 gravel material on 65km unsealed road.
- Light formation to rectify unsealed roads had a total length of 39km.
- Heavy formation to rectify unsealed roads had a total length of 30km.
- Installation of guideposts, depth indicators and regulatory signs.

Achievements

Shamrock Civil were able to meet the tight construction schedule by setting up a 36 men camp on site to increase working hours and reduce travel time to and from site. This enabled Shamrock Civil to manage and minimise the risk of fatigue for its workers and labourers while increasing productivity and accelerating the works.





QGC NORTHERN WATERS TREATMENT PLANT WATER & SEDIMENT PONDS

Location

Woleebee QLD

Client

Laing O'Rourke

Commencement Date

February 2013

Completion Date

September 2013

Contract Value

\$36M

Overview

Shamrock Civil Engineering was contracted to undertake the construction of the sediment ponds within the Northern Waters Treatment Plant. The plant treats water from QGC's northern coal seam gas fields using advanced water treatment technologies with 97 per cent of the water recovered and beneficially reused by the local community and farmers.

Scope of Works

- Site clearing and grubbing of 340,000m²
- Topsoil stripping and stockpiling of 50,000m³
- Subgrade preparation of 460,000m² including tyne, condition and compacting natural surface under fill areas and exposed cut areas to 200mm depth
- Ripping, loading and hauling of 300,000m³ of sandy clay material to embankments
- Cutting and carting of 90,000m³ of material from borrow areas and stockpiles
- Spreading and compaction of 400,000m³ of cut material on embankment and 38,000m³ of clay layered floor to 125mm
- Construction of temporary access roads including excavation of spoil and clay for reuse, final trimming, placement of gravel rods along crest of walls
- Final trimming of 375,000m² internal pond area including soil conditioning and final trimming of 80,000m² external batters of bunds
- Supply and installation of piezometers
- Installation of 134m of 100mm dia uPVC outlet pipes for underliner drainage

Achievements

The project achieved an outstanding safety record, with over 350,000 man hours LTI free.





TOWNSVILLE FIELD TRAINING AREA (TFTA) 3 YEAR ROAD WORKS (YEAR 1 & 2)

Location

Townsville Field Training Area, QLD

Client

Aurecon (DoD)

Commencement Date

June 2020

Completion Date

June 2021

Contract Value

\$8.3M

Overview

Shamrock Civil were awarded the project to deliver road maintenance and upgrades within Piccadilly Sector to the primary (Piccadilly Road) and secondary roads (Jacks Road and Unnamed Road) within Townsville Field Training Area.

Upon completion of these works Shamrock Civil were awarded variation road maintenance works in the Northern Sector to the Super Highway and Kiery's Road (combined 25km) and Star Road (10km).

Scope of Works

- UXO Investigation and Clearance
- Environmental Management & vegetation clearing
- Bulk excavate surplus material to spoil of 2000t. Bulk fill scoured out areas of 1500t
- Gravel Supply/Top up, Light, Medium & Heavy formation grading
- Placement average 150mm layer of 2.5 gravel material on 36km unsealed road (40,000t of gravel)
- Reshape table drains
- Cement Stabilise cutoff walls and floodways
- Reconstruct existing Rock Check Dam
- Repair existing signs, replace guide posts/markers and install new signs
- Installation of around 650 rock check dams. Construction of drains of a total length 124km
- Rock protection (200mm and 500mm)
- Replace head/end wall

Achievements

Shamrock Civil successfully delivered this project on time and within budget. We reached 86,400 hours lost time injury (LTI) free, and with nil environmental incidents.

Shamrock Civil successfully manufactured all quarry materials required from the sources available at Mount St Michael Quarry within TFTA preventing the necessity to import materials and therefore negating the risk of weed introduction to TFTA.





NACKEROO AIRFIELD UPGRADE - CIVIL WORKS

Location

Timber Creek, NT

Client

Sitzler

Commencement Date

June 2022

Completion Date

May 2024

Contract Value

\$36.4M

Overview

Shamrock Civil Engineering (SCE) was engaged to complete the civil scope of works package in the construction of an airstrip at the Bradshaw Field Training Area.

These works are all focused at the Nackeroo Airfield Strip; originally a 1.5km long airstrip that is being extended and upgraded to provide a fit for purpose landing strip for C17 Globemasters' & a V-22 Osprey Tiltrotor Aircrafts'.

Scope of Works

The work consists of:

- Land clearing in conjunction with local and external stakeholders
- Earthworks cut to fill of 50,000m³
- Construction of subbase pavement totalling 46,000m³
- Fine crushed rock paving totalling 12,500m³
- Spray sealing of pavement totalling 100,000m²
- Finishing works involving installation of airfield furniture, line marking, landscaping & fencing works
- Stormwater, involving a total of 4km of swale installation, culvert lines, rock lined drain installation, and floodways
- Onsite production of 110,000t of subbase material and 100,000t of General fill to complete airstrip

Shamrock have also been engaged to facilitate the completions HOTO/CHOTO of the airstrip, ensuring an expedient product is delivered to the client.

Achievements

- Establishment of an on-site quarry managing to provide significant cost savings and value to the client, through strategic and effective management of quarry operations.
- Lessons learnt from previous scope of works at the Bradshaw Field Training Area brought forward to continue the high-performance culture that has been previously set.





MELBOURNE REGIONAL LANDFILL (MRL) CELL 3C, 4A, 4B1-3, 4C1-4 AND CELL 1

Location

Ravenhall, VIC

Client

Cleanaway Solid Waste Pty Ltd

Commencement Date

February 2018

Completion Date

February 2023

Contract Value

\$50M

Overview

Shamrock Civil Engineering secured multiple packages at Cleanaway's MRL facility. The projects comprised 4 individual tenders secured by Shamrock Civil and a total of 10 Cells to be constructed. The packages all contained similar project scopes involving the construction of new landfill cells adjacent to the existing operating landfill facility in Ravenhall, Melbourne.

Scope of Works

- Subgrade excavation. Shamrock Civil excavated in excess of 200,000m³ in-situ material and placed over 500,000m³ of subgrade material.
- Placement of 500,000m³ compacted clay liner.
- Installation of geosynthetic lining system including 500,000m² of Geosynthetic Clay Liner (GCL); 500,000m² of HDPE Geomembrane; 1,000,000m² Protection Geotextile (Cushion) and 500,000m² Separation Geotextile. Reinforcing on Batters. Protective drainage soils on batters.
- Supply and installation of Leachate Collection System including 15,000 lm of pipe and sump risers.
- Installation of 250,000 m³ of drainage aggregate.

Achievements

At the request of Cleanaway, Shamrock Civil accelerated the construction program of multiple projects, with tight deadlines successfully met.

Shamrock Civil provided works and services in other areas of the site to assist operations and help improve the site.

Shamrock Civil successfully delivered all projects with zero LTIs.





PACIFIC HWY UPGRADE, WOOLGOOLGA TO BALLINA – ANCILLARY SITE COMPOUNDS

Location

Between Ballina &
Woolgoolga, NSW

Client

Pacific Complete (RMS)

Commencement Date

November 2016

Completion Date

April 2021

Contract Value

\$30M

Overview

Shamrock Civil Engineering was awarded the contract for the design and construct of the Principal's project accommodation on the Pacific Highway Upgrade – Woolgoolga to Ballina Project. The accommodation was located on a number of ancillary site's that were identified along the 155km section of the Pacific Highway.

Scope of Works

- Detailed design of all elements of Pacific Complete's major ancillary site compounds
- Access roads and enabling works into the site compounds (from the Pacific Highway)
- Clearing and grubbing
- Earthworks and hardstand pad design and construction
- Drainage and levels
- All necessary underground/ overhead services (including the design and construction of mains power delivery, sewer and water where applicable).
- Design, supply and installation of full scale temporary buildings, including: office buildings, crib facilities, toilets, meeting rooms and training rooms.
- Removal, demolition and rehabilitation of each site compound, upon conclusion of the main contact works on the Pacific Highway





TOWNSVILLE FIELD TRAINING AREA (TFTA) FANNING RIVER NORTH CIVIL WORKS

Location

TFTA, Hervey's Range, QLD

Client

Augility (Department of Defence)

Commencement Date

June 2021

Completion Date

June 2022

Contract Value

\$12M

Overview

Shamrock Civil were awarded the project to construct 24km of new unsealed road. The purpose of this project was to create a Main Supply Route (MSR) in the Fanning North Sector to allow safe and efficient access for units utilising the Training Area enabling it to be used to a higher training capacity and consequently increasing the capabilities of TFTA. Civil works include earthworks, road construction, road drainage, creek crossing establishment and signage.

Scope of Works

- Clearing and grubbing and stripping of topsoil for road construction.
- Approx. 138 000m² earthworks for road construction including cut and fill of table drain. Total D50 300: 7365 T, Total Gabion: 1290.98 T, Total 450mm Rock: 1401.76 T
- Mass haulage of spoil including cut, cartage, compaction at stockpiles, laydown pads/staging areas, and subgrade locations.
- 48km of table drainage installed.
- 30m of 450RCP pipe installed.
- 2 x Culverts installed.
- Pavement material supply and pavement construction for road and laydown pads/staging areas.
 - Total 2.3 gravel: 19205.8 T
 - Total 2.5 gravel: 103967.82 T
 - Approx. 9500m² of Asphalt installed
- Establish crossings including excavation, rock fill and geotextile install.
- Signage supply and install.
- Vegetation and erosion protection including hydro mulching, reuse of topsoil and grass seeding.

Achievements

Shamrock Civil proposed changes to parts of the route of the MSR in order to avoid disturbing the indigenous trees and artefacts.

Daily communication between the project team and the client ensured the project finished on time and within budget.

The project remained LTI free throughout the 48 week duration. This was a result of the project team's successful planning and strong commitment to safety.





CULTANA TRAINING AREA 3 YEAR ROAD WORKS

Location

Whyalla SA

Client

Department of Defence (Aurecon)

Commencement Date

February 2021

Completion Date

July 2022

Contract Value

\$10.5M

Overview

The primary scope of work for the Cultana Training Area Roadworks project is road (11.5km) and drainage/culvert construction to ensure a fit for purpose structure.

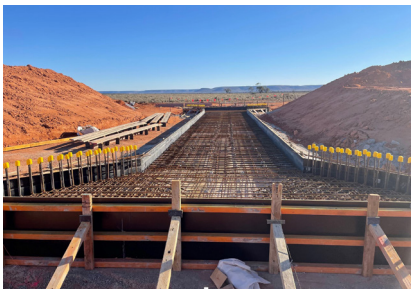
The site is situated in the Australian Army Cultana Training Area adjacent to Lincoln Highway and Port Bonython Road, Whyalla SA.

Scope of Works

- UXO and cultural heritage site inspection
- Clearing and grubbing, stripping of seedbank (top 30mm) and stripping of topsoil
- Surface preparation for acceptance of general fill
- SCE quarried general fill on-site and placed to design specifications under own supervision
- Import & place pavement materials 150mm subbase & 150mm wearing course
- Construct 20 RCBC Culvert Crossings with custom headwalls, apron slabs and rock protection
- Construct swale drain parallel to new road approx. 1.65km with rock protection at outlets
- Street furniture, fencing etc

Achievements

Shamrock Civil delivered this project achieving 'zero harm' relating to health, safety and environment. The completion of this project exceeded the contract schedule requirements in a timely manner without negatively impacting on the operation of the Defence facilities or neighboring properties or affecting Defence capabilities. Shamrock Civil engaged local contractors and resources from the Eyre Peninsula, which met our minimum 50% local participation target.





VICTORY ROAD CELL 4B (PHASE 2)

Location

Clarinda, VIC

Client

Transpacific / Cleanaway

Commencement Date

June 2015

Completion Date

December 2016

Contract Value

\$11.8M

Overview

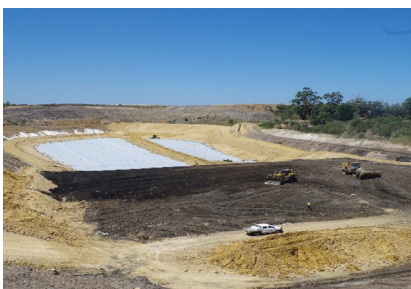
Shamrock Civil were contracted by Cleanaway to construct Cell 4B at Victory Road Landfill. This project was on a brownfield site, with the base of the cell several metres below the water table, with ground conditions that required careful management and planning. The staging was also complex, with Cell 4B being split into 3 separate portions, which were constructed at different times. This staging was to facilitate transferring existing solid-inert waste from one cell embankment, to the newly constructed sections. Each cell comprised of a groundwater depressurisation system, a 1m thick compacted clay liner and a dedicated leachate collection system.

Scope of Works

- Subgrade reshaping
- Construction of a ground water collection system, 1m thick compacted clay liner and a leachate collection system with separation geotextiles
- Temporary dewatering
- Haul roads and ramps
- Slimes drying pan management and ground improvement measures

Achievements

Due to the instability of the ground conditions Shamrock were required to construct a bridging layer, to create a suitable subgrade. The bridging layer constituted multiple layers of woven and non-woven geofabrics and varying sizes of rock placed in layers, to bridge the slimes material in the bottom of the cell. These works were carried out on a live landfill site, with several interfaces with the client's own operations. Due to outstanding performance, Shamrock Civil were awarded the construction of an additional access road into the site. A total of 93,538 hours were worked with no LTI's. A notable achievement, given the complex nature of the site and interaction with other contractors and the public.





BFTA GENERAL ROADS & CIVIL WORKS NT

Location

Timber Creek, NT

Client

Sitzler

Commencement Date

March 2022

Completion Date

August 2023

Contract Value

\$12M

Overview

Shamrock Civil Engineering (SCE) has been engaged by Sitzler / Dept of Defence to construct a new secondary road and hardstand in the Bradshaw Field Training Area (BFTA).

The area of works is for the Urban Operation Training Facility (UOTF); a new training site within the BFTA. The UOTF once fully commissioned, will house both Australian and American soldiers and be a facility to allow them to train all year round.

Scope of Works

There are two main sections of works in this project:

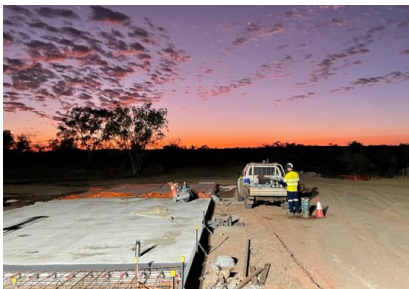
- UOTF Road - 5.36 km of unsealed road leading to the UOTF Hardstand involving: multiple pavement types, sediment controls around water ways, installation of concrete floodways with reno-mattresses/ rock protection and signage.
- UOTF Hardstand – 60,000 m2 of bulk earthworks involving: internal roads, precast and in-situ stormwater products.

The bulk of works consists of the following:

- Vegetation clearing with Flora/ Fauna spotter present
- Establishing a quarry and producing multiple types of granular materials
- Construction of water infrastructure and upgrades of existing bores and turkeys' nests
- Earthworks which include cut to fill
- Laying and compacting different pavement layers
- Stormwater works, including swale drain installation and culvert drainage systems.

Achievements

- All concrete floodway works have been completed across UOTF Road
- Sediment control set up for river crossing prior to wet season commencing
- Road Earthworks are approximately 90% complete
- All ground surface treatment and in-situ proof rolls have been completed for training ground
- Working alongside the Client to complete the QA / HOTO documentation utilising OmTrack.





TRANSPORT INFRASTRUCTURE REPAIRS AND RENOVATIONS, MANUS ISLAND

Location

Manus Province, PNG

Client

PNG-AUS Transport Sector Support Program

Commencement Date

December 2014

Completion Date

November 2016

Contract Value

\$27M

Overview

Shamrock Civil Engineering was engaged by Papua New Guinea-Australia Transport Sector Support Program (TSSP) to provide transport infrastructure repair works in Manus Province, PNG.

Construction works were located in a remote area, with challenging tropical conditions and high rainfall.

Scope of Works

The scope of works involved earthworks, pavement, stormwater drainage works, bitumen sealing works and construction of road furniture, kerb and channel to the following locations:

- Lorengau Market Place roads
- Lorengau to Momote road repairs
- Sea Inundation (raise sections of roadway and improve sea protection)
- Paint and repair Loniu and Nuwok Bridges



Achievements

Shamrock Civil Engineering were commended on their successful delivery of this project. This project was delivered with no environmental impacts, on time and within budget.





REEF HQ OFFICE DEMOLITION

Location

Townsville, QLD

Client

Great Barrier Reef Marine Park Authority

Commencement Date

July 2021

Completion Date

November 2021

Contract Value

\$2.4M

Overview

Shamrock Civil was awarded the project to conduct demolition works at Reef HQ, a set of three buildings which had been vacant for several years. The buildings were subject to water damage, and with no sunlight exposure and minimal airflow, had extensive mould growth throughout the buildings. The buildings were unsuitable for use and marked for demolition.

Scope of Works

The demolition works consisted of the following:

- Decommissioning of existing fire panel within the Reef Wonderland Building and relocation of electrical access
- Mould remediation to three separate buildings, including 3 storey office building, cultural centre and IMAX theatre
- Erection of hoarding scaffold to the perimeter of the works site.
- Traffic management on public roads
- Vibration monitoring to adjacent structures
- Safe demolition of all structures to slab level
- Installation of semi-permanent hoarding fence with vehicle access gates and pedestrian access gates

Achievements

The project was completed on time and within budget. As the project was adjacent to the creek's edge there was a spotlight on the possible environmental impacts the project could have. Erosion and sediment control was managed in the form of scaffold fitted with spidermesh to prevent contamination of the creek. The project was completed without environment incident. Stakeholders such as private residents and business in the area were informed of the works prior to commencement – works were completed without complaint and to the satisfaction of all stakeholders.





GREENBANK TRAINING AREA – OXLEY CREEK BRIDGE

Location

Greenbank QLD

Client

Department of Defence (Aurecon)

Commencement Date

November 2023

Completion Date

February 2025

Contract Value

\$4.9M

Overview

Shamrock Civil was awarded the GBTA Oxley Creek Bridge project which involved the design and construction a suitable bridge structure over the Oxley Creek within the Greenbank Training Area.

Scope of Works

The bridge comprised of the following:

- Design of a flood immune bridge over the Oxley Creek to a 1 in 100-year flood event.
- Excavation and placement of 6,000m³ fill within the downstream batter and Installation of 7000 tons of abutment and scour protection rock.
- Installation of a new bridge substructure including 900mm diameter piles at each abutment pier locations.
- Upgrade of the existing road approaches including line marking and signage.

The Bridge comprised:

- Multi span Bridge 5m wide carriageway
- Insitu Poured headstocks
- Expansion joints at pier and abutment centers
- Asphalt on approach and in turning areas

Achievements

Shamrock Civil successfully delivered the project with zero LTI's and zero NCR's, with over 10,000 manhours, Furthermore, the works were performed by Shamrock Civil with a staged and calculated methodology to ensure that there was no risk to the integrity or safety of the dam throughout the project. This approach by Shamrock Civil was key to the successful delivery of the project and was praised by all stakeholders involved.





CONTACT INFORMATION

ADELAIDE

☎ 08 8244 2335
✉ adelaideadmin@shamrockcivil.com.au
📍 Suite 3/ 128 Fullarton rd, Norwood, SA 5067

BRISBANE

☎ 07 3727 1100
✉ estimating@shamrockcivil.com.au
📍 195 Cobalt Street, Carole Park QLD 4300

DARWIN

☎ 08 8947 1424
✉ darwinadmin@shamrockcivil.com.au
📍 Building 3, Level 2, 631 Stuart Highway, Berrimah NT 0828

MELBOURNE

☎ 03 9543 4511
✉ melbourneadmin@shamrockcivil.com.au
📍 Suite 4 Building 25, 270 Ferntree Gully Road, Notting Hill VIC 3168

ROCKHAMPTON

☎ 07 4922 7012
✉ estimating@shamrockcivil.com.au
📍 Ground Floor Suite 2, 130 Victoria Parade, Rockhampton QLD 4700

TOWNSVILLE

☎ 07 4417 1600
✉ townsvilleadmin@shamrockcivil.com.au
📍 646 Ingham Road, Mount Louisa QLD 4814